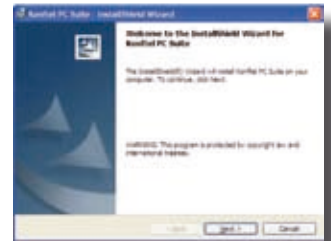




Konftel Quick upgrade guide

Instructions for Konftel 300 & Konftel 300W

1. ■ Install Konftel PC Suite 2.0 on your computer
■ Download from www.konftel.com/upgrade (choose model)



2. ■ Connect your Konftel
■ Connect your Konftel with USB to your computer and start Konftel PC Suite 2.0. Follow the instructions.



3. ■ Download and Install the latest upgrade
■ Konftel PC Suite 2.0 will detect and download the latest upgrade automatically. You may also download the latest upgrade manually from the Konftel webpage.
■ www.konftel.com/upgrade (choose model)

4. ■ Finished
■ Exit Konftel PC Suite 2.0 and re-start your Konftel by removing and then reinserting the power plug. A message will appear in the display.

5. ■ Start using!